



# Riverside County Regional Park and Open-Space District

Kyla Brown, Parks Director / General Manager

JUNE 1, 2022

## RESULTS: Riverside County Off-Highway Vehicle Feasibility Study

Between March 2021 and February 2022, the Riverside County Regional Park and Open-Space District (RivCoParks), in partnership with the State of California Off-Highway Motor Vehicle Recreation Division, conducted a county-wide feasibility study for a potential future public off-highway vehicle (OHV) park. The purpose of this study was to identify locations for a regional OHV recreation area in Riverside County. This study considered land ownership; sensitive lands; sources of noise, and dust; cultural resource and environmental protection; and private land rights when considering potential OHV park sites.

### FEASIBILITY STUDY PROCESS

From the very beginning of the project, RivCoParks and our consultant, KTUA, conducted six stakeholder meetings with our OHV Steering Committee. The stakeholder group was comprised of community and industry leaders from Riverside County. The results of these meetings were integrated into a three-tiered planning process. **Tier 1** involved this initial stakeholder input as well as a detailed analysis of GIS data and the conducting of a market analysis of OHV users throughout the county. Opportunity-and-constraint factors were used to filter an initial list of 64 potential OHV sites down to 12. **Tier 2** analysis began with a review of each of these 12 sites by the Riverside County OHV Steering Committee, and the Riverside County Park District Advisory Commission, the Fish and Wildlife Service, and the Western Riverside County Regional Conservation Authority to determine potential issues and opportunities. A project website was published where interactive maps of the 12 potential sites were posted and surveys were collected from interested community members. Over 700 people responded to the survey with more than 80% in favor of an OHV park being constructed in Riverside County. This additional input allowed our consultant to narrow the list of 12 sites down to six.

### RESULTS

**Tier 3** of the study involved collecting additional surveys from the community and hosting a community forum meeting in January of 2022. The final six sites were analyzed in detail for how well they could be utilized for OHV purposes, including the maximum acreage usable for various uses like motorcycle use, 4x4 use, and camping. This data, together with final input from stakeholders and members of the community, allowed RivCoParks and our consultant to narrow the list of six sites down to four:

1. Banning North (Fifth District)
2. Banning South (Fifth District)
3. Double Butte (Third District)
4. Coachella South (Fourth District)

### NEXT STEPS

RivCoParks is seeking additional funding to allow us to conduct an environmental review of the remaining four potential sites. Through the environmental review process, one or two sites will likely emerge as the most feasible for use as an OHV park. The next round of grants from the State of California opens in Spring of 2023. If funding is secured through these grants, the environmental review process will likely take place beginning in Winter of 2023 and continuing through the winter of 2024. Additional funding sources are also being explored in an effort to start the environmental study process this year.





# Riverside County Regional Park and Open-Space District

Kyla Brown, Parks Director / General Manager

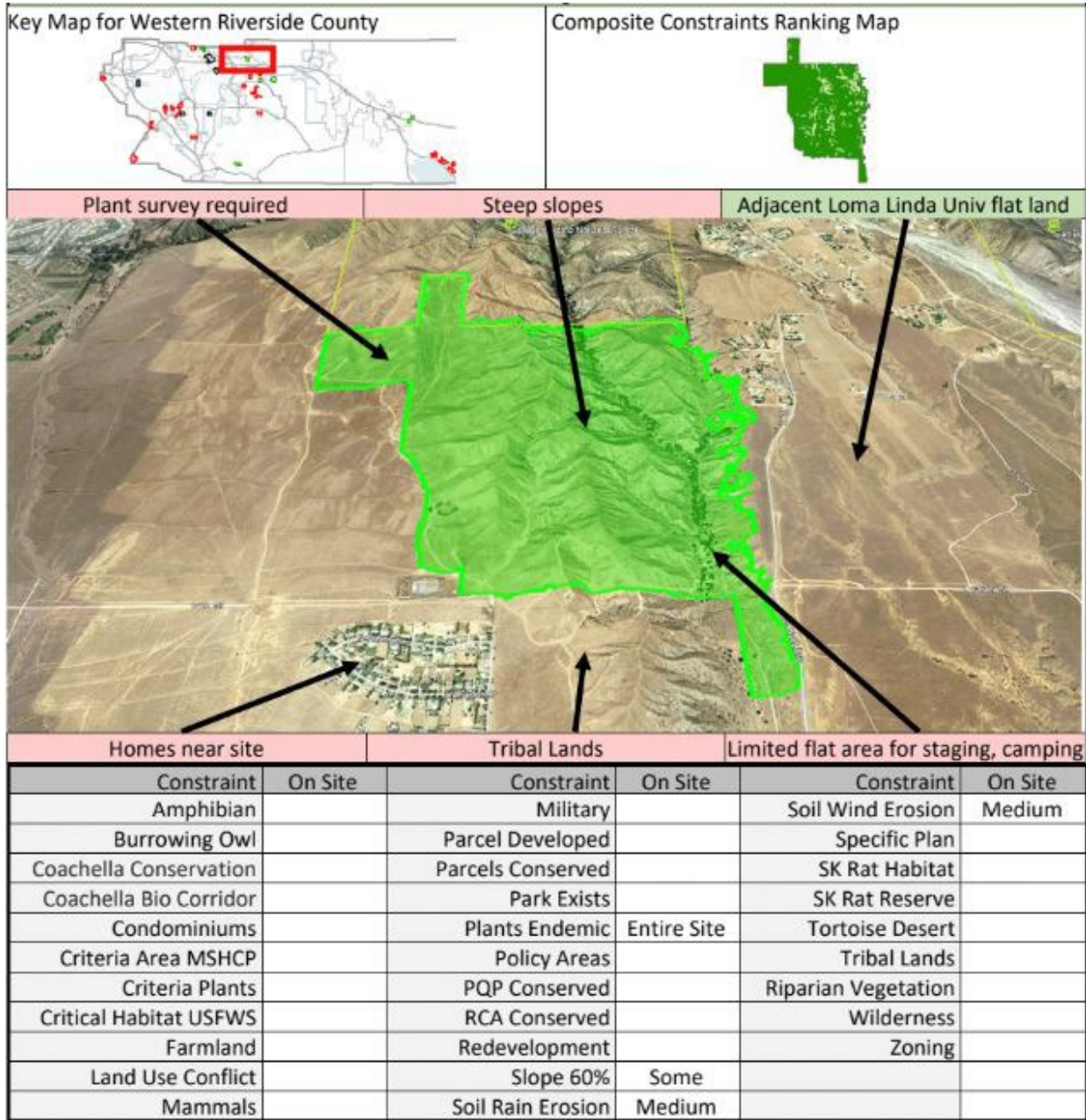


Figure 1: Banning North Site





# Riverside County Regional Park and Open-Space District

Kyla Brown, Parks Director / General Manager

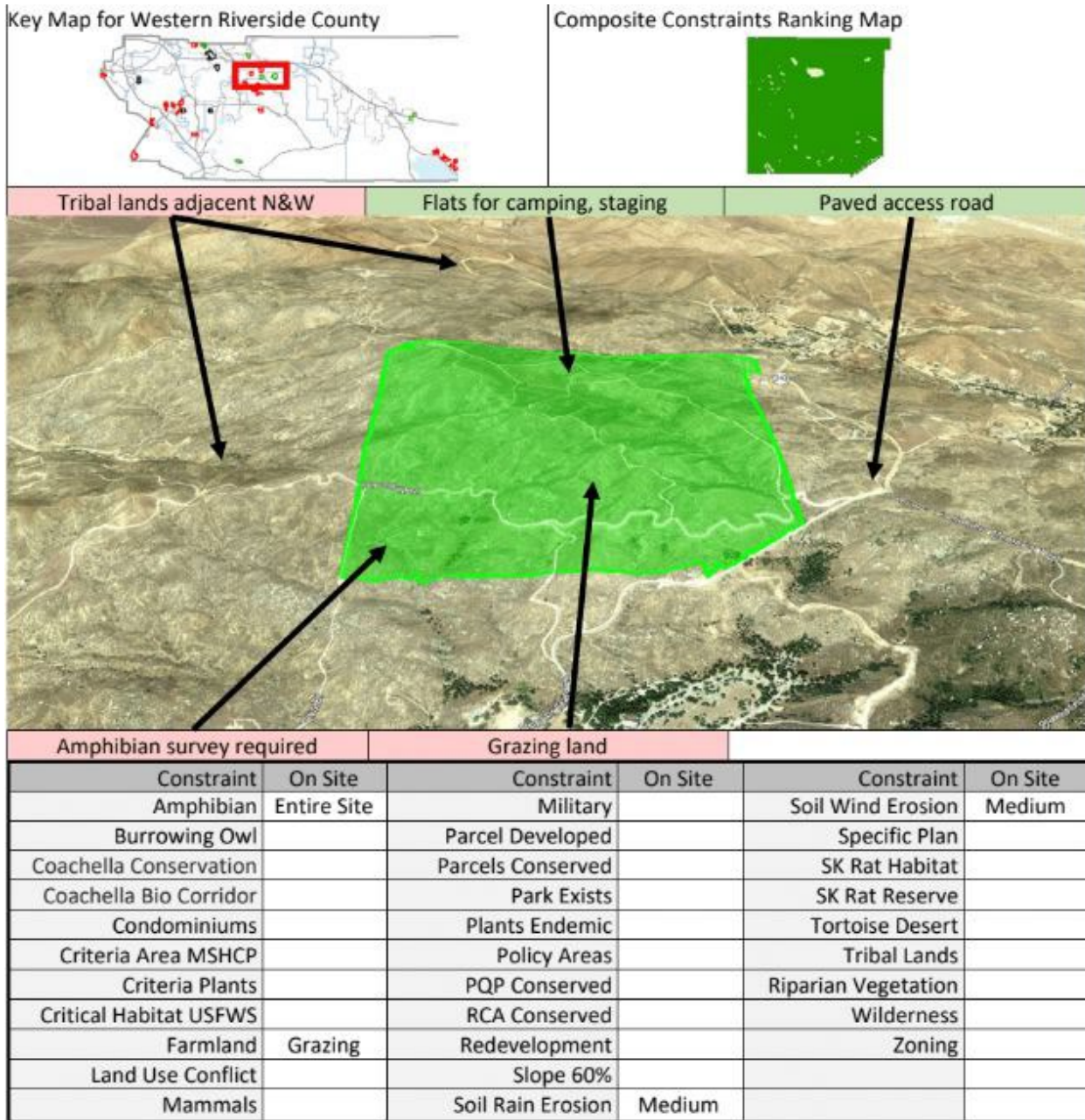


Figure 2: Banning South Site





# Riverside County Regional Park and Open-Space District

Kyla Brown, Parks Director / General Manager

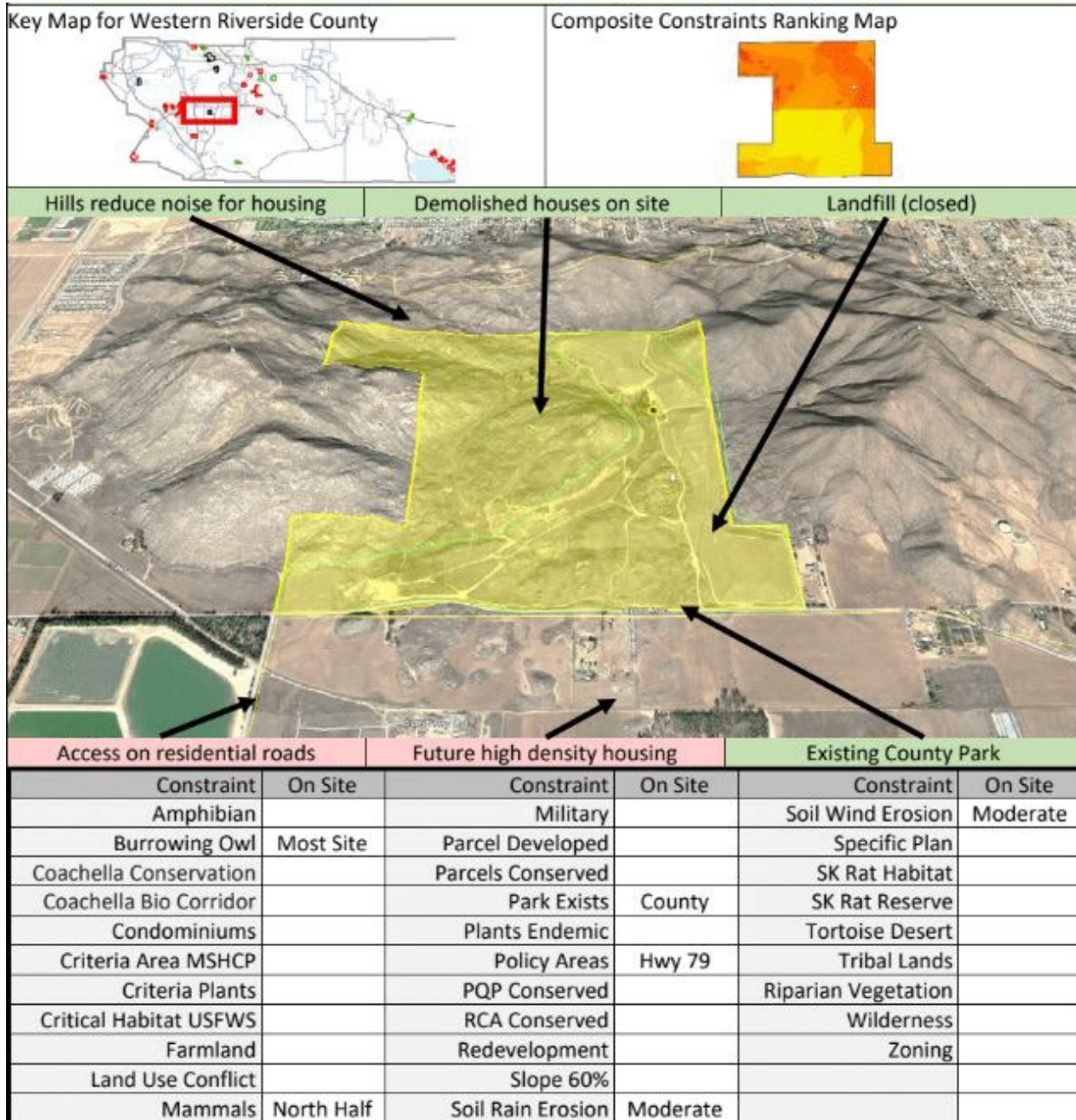


Figure 3: Double Butte Site





# Riverside County Regional Park and Open-Space District

Kyla Brown, Parks Director / General Manager

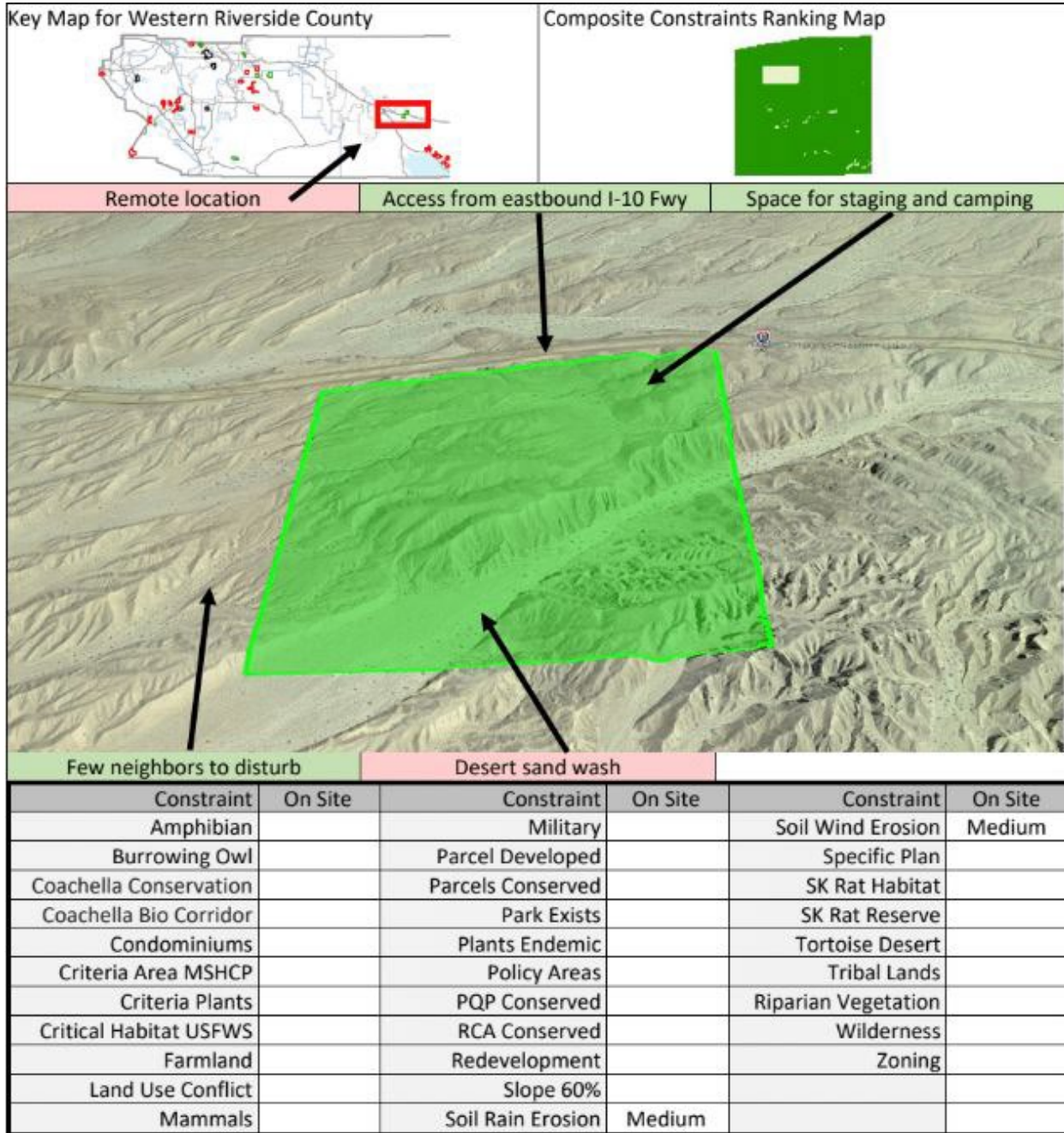


Figure 4: Coachella South Site

